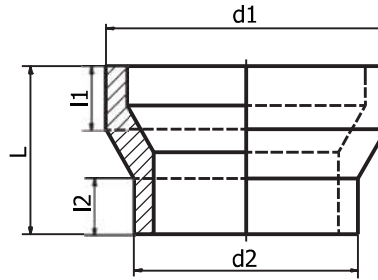


**PN10 SDR17 SHORT REDUCER**

**Material:** PE100  
**Colour(s):** Black  
**Operating pressure:** 10 Bar (SDR17 PN10)  
**Standards:** PN-EN 12201-3+A1:2013  
 Fittings approved by PZH (Polish Institute of Hygiene)  
**Documents:** National Declaration of Performance



**REDUCER**

CODE	d1/d2	d1 [mm]	d2 [mm]	l1 [mm]	l2 [mm]	L min [mm]
012 17 12550	125/50	125	50	45	50	120
012 17 12563	125/63	125	63	40	30	110
012 17 12575	125/75	125	75	40	30	100
012 17 12590	125/90	125	90	40	30	110
012 17 125110	125/110	125	110	40	30	110
012 17 14063	140/63	140	63	40	30	110
012 17 14075	140/75	140	75	40	30	110
012 17 14090	140/90	140	90	40	30	110
012 17 140110	140/110	140	110	40	35	100
012 17 140125	140/125	140	125	40	35	100
012 17 16050	160/50	160	50	40	35	110
012 17 16063	160/63	160	63	45	35	120
012 17 16075	160/75	160	75	45	35	120
012 17 16090	160/90	160	90	40	35	110
012 17 160110	160/110	160	110	45	50	120
012 17 160125	160/125	160	125	40	30	110
012 17 160140	160/140	160	140	40	30	110
012 17 18090	180/90	180	90	40	30	110
012 17 180110	180/110	180	110	40	30	110
012 17 180125	180/125	180	125	40	30	110
012 17 180140	180/140	180	140	40	30	110
012 17 180160	180/160	180	160	40	30	110
012 17 20090	200/90	200	90	45	35	120
012 17 200110	200/110	200	110	45	35	120
012 17 200125	200/125	200	125	45	35	120
012 17 200140	200/140	200	140	45	35	120
012 17 200160	200/160	200	160	45	40	120
012 17 200180	200/180	200	180	45	40	120
012 17 22590	225/90	225	90	45	40	120
012 17 225110	225/110	225	110	45	40	120
012 17 225125	225/125	225	125	45	40	120
012 17 225140	225/140	225	140	45	40	120
012 17 225160	225/160	225	160	55	45	130
012 17 225180	225/180	225	180	55	45	130