

## PN16 SDR11 SHORT REDUCER

**Material:** PE100

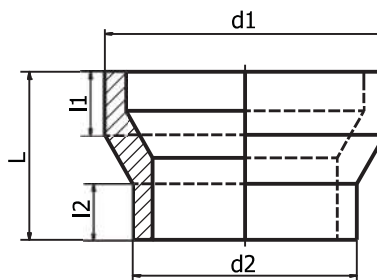
**Colour(s):** Black

**Operating pressure:** 16 Bar (SDR11 PN16)

**Standards:** PN-EN 12201-3+A1:2013

Fittings approved by PZH (Polish Institute of Hygiene)

**Documents:** National Declaration of Performance



## REDUCER

CODE	d1/d2	d1 [mm]	d2 [mm]	l1 [mm]	l2 [mm]	L min [mm]
012 11 225200	225/200	225	200	55	45	130
012 11 25090	250/90	250	90	55	45	130
012 11 250110	250/110	250	110	40	30	130
012 11 250160	250/160	250	160	40	30	125
012 11 250180	250/180	250	180	40	35	130
012 11 250200	250/200	250	200	40	35	130
012 11 250225	250/225	250	225	35	35	110
012 11 280125	280/125	280	125	50	35	120
012 11 280160	280/160	280	160	50	35	120
012 11 280200	280/200	280	200	50	35	120
012 11 280225	280/225	280	225	50	35	120
012 11 280250	280/250	280	250	50	35	120
012 11 315160	315/160	315	160	50	35	120
012 11 315180	315/180	315	180	50	35	120
012 11 315200	315/200	315	200	50	35	120
012 11 315225	315/225	315	225	50	30	120
012 11 315250	315/250	315	250	55	30	120
012 11 315280	315/280	315	280	35	35	120
012 11 355180	355/180	355	180	35	35	120
012 11 355200	355/200	355	200	35	36	120
012 11 355225	355/225	355	225	35	35	120
012 11 355250	355/250	355	250	35	35	120
012 11 355280	355/280	355	280	35	35	120
012 11 355315	355/315	355	315	45	45	120
012 11 400315	400/315	400	315	60	50	160
012 11 400355	400/355	400	355	60	45	120
012 11 450315	450/315	450	315	55	40	140
012 11 450355	450/355	450	355	57	40	130
012 11 450400	450/400	450	400	60	40	130
012 11 500400	500/315	500	315	65	40	140
012 11 500450	500/400	500	400	65	40	140

Reducers other than included in the tables are available upon request.