

**PN10 SDR17 TAPPING TEE (90 DEGREES)**

**Material:** PE100

**Colour(s):** Black, with a blue stripe

**Operating pressure:** 8 Bar (SDR17 PN8)

- A pressure reduction coefficient of 0.8 was applied.

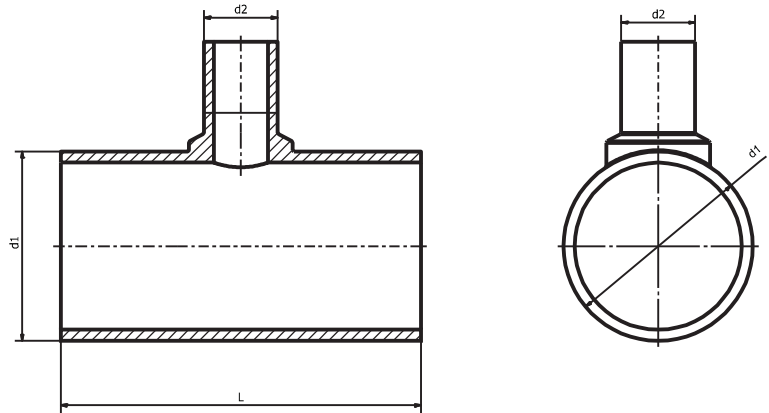
Standard tees can be reinforced to match the nominal pressure rating of the pipe. Ask us for a quotation.

**Documents:**

National Declaration of Performance

**Standards:** PN-EN 12201-3+A1:2013

Fittings approved by PZH (Polish Institute of Hygiene)



**TAPPING TEE**

CODE	d1 [mm]	d2 [mm]	L [mm]
008 17 9032	90	32	450
008 17 9040	90	40	450
008 17 11032	110	32	470
008 17 11040	110	40	470
008 17 11050	110	50	470
008 17 11063	110	63	470
008 17 11075	110	75	470
008 17 12532	125	32	525
008 17 12540	125	40	525
008 17 12550	125	50	525
008 17 12563	125	63	525
008 17 12575	125	75	525
008 17 14032	140	32	540
008 17 14040	140	40	540
008 17 14050	140	50	540
008 17 14063	140	63	540
008 17 14075	140	75	540
008 17 16032	160	32	600
008 17 16040	160	40	600
008 17 16050	160	50	600
008 17 16063	160	63	600
008 17 16075	160	75	600
008 17 16090	160	90	600
008 17 18032	180	32	620
008 17 18040	180	40	620
008 17 18050	180	50	620
008 17 18063	180	63	620
008 17 18075	180	75	620
008 17 18090	180	90	620
008 17 180110	180	110	620

CODE	d1 [mm]	d2 [mm]	L [mm]
008 17 20040	200	40	680
008 17 20050	200	50	680
008 17 20063	200	63	680
008 17 20075	200	75	680
008 17 20090	200	90	680
008 17 200110	200	110	680
008 17 200125	200	125	680
008 17 22532	225	32	705
008 17 22540	225	40	705
008 17 22550	225	50	705
008 17 22563	225	63	705
008 17 22575	225	75	705
008 17 22590	225	90	705
008 17 225110	225	110	705
008 17 225125	225	125	705
008 17 225140	225	140	705
008 17 25032	250	32	850
008 17 25040	250	40	850
008 17 25050	250	50	850
008 17 25063	250	63	850
008 17 25075	250	75	850
008 17 25090	250	90	850
008 17 250110	250	110	850
008 17 250125	250	125	850
008 17 250140	250	140	850
008 17 250160	250	160	850
008 17 28032	280	32	880
008 17 28040	280	40	880
008 17 28050	280	50	880
008 17 28063	280	63	880